



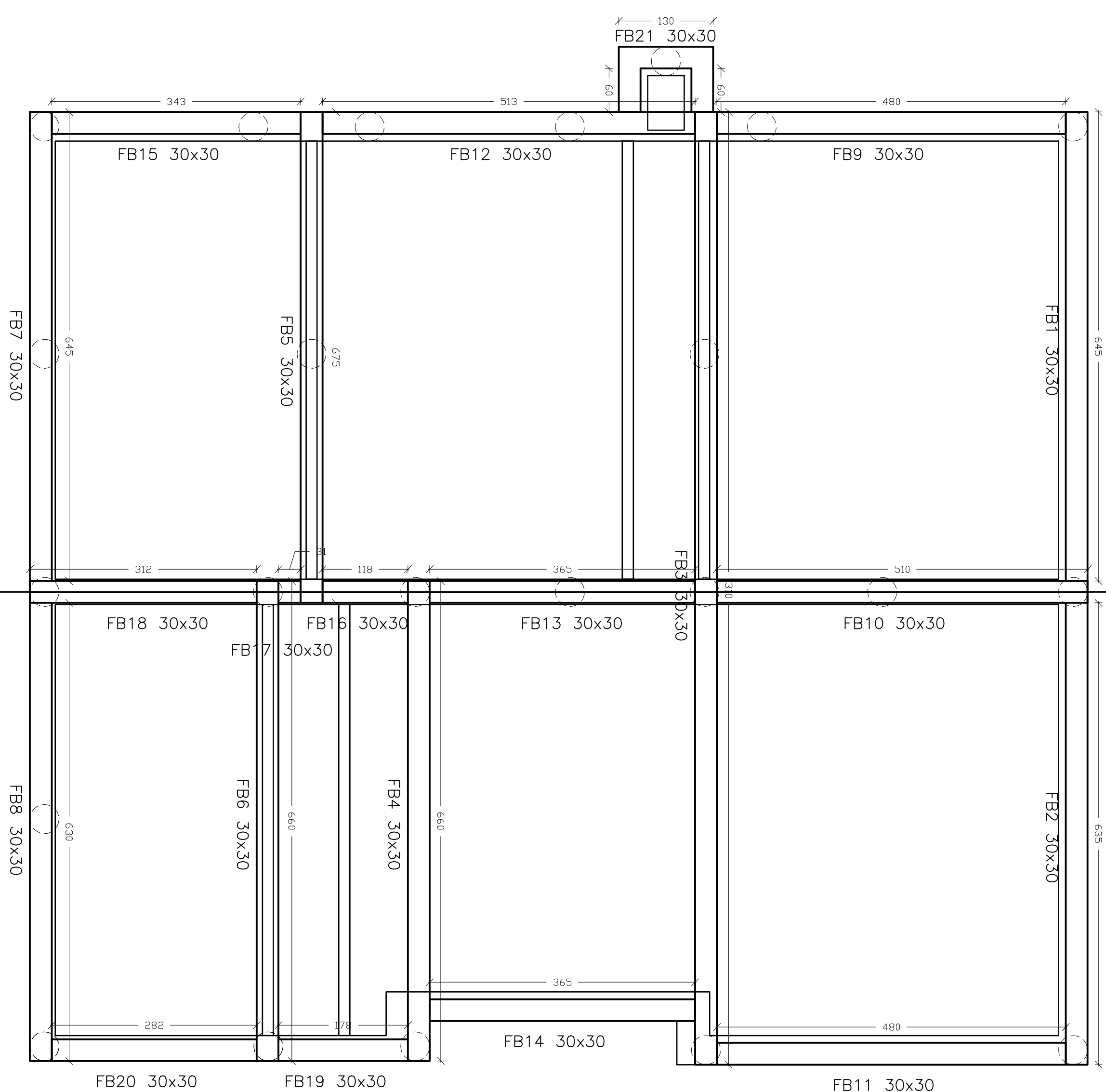
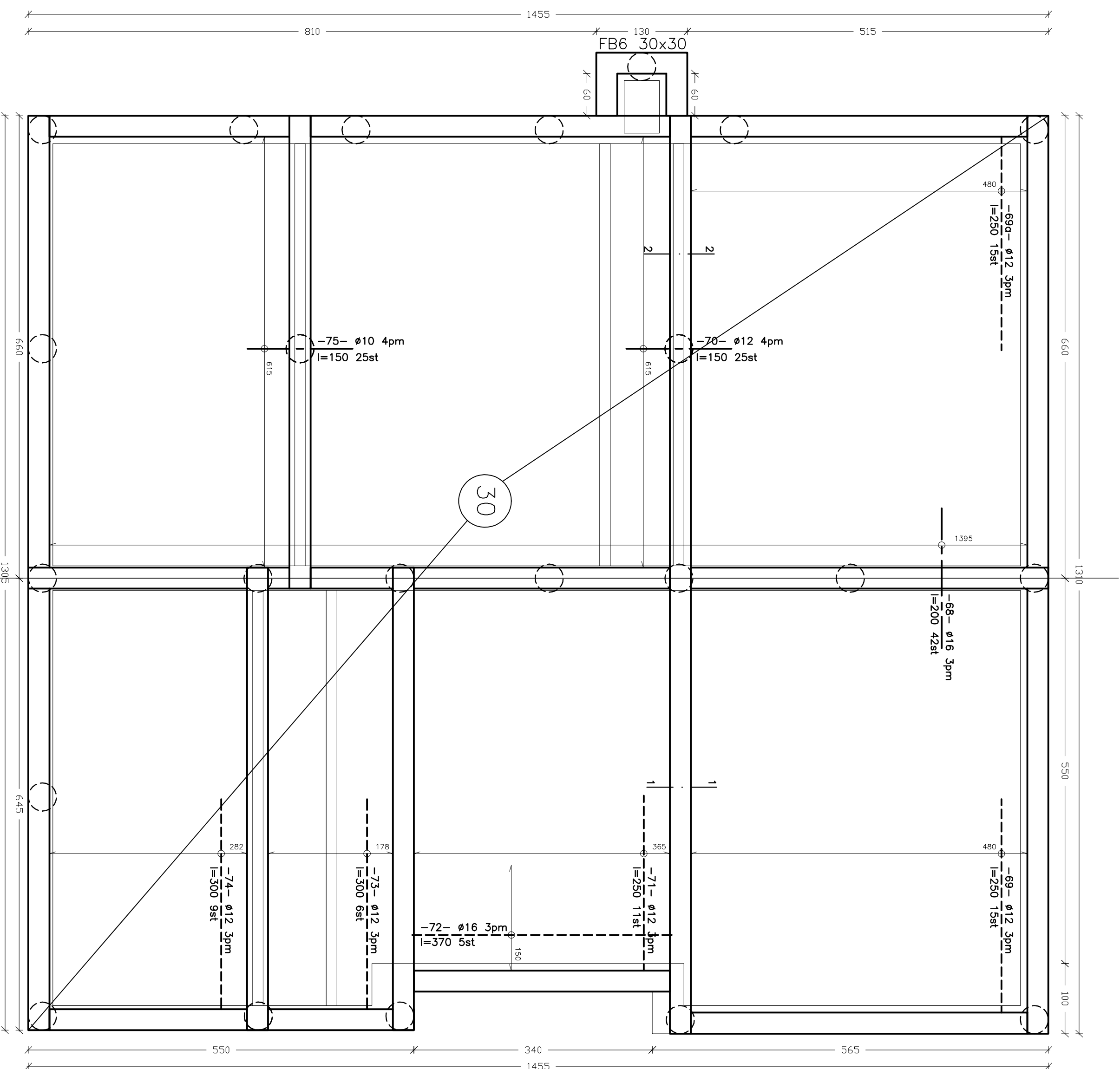


- Legend - Poolcast (2,3sl):
- |                                                                                       |                                        |
|---------------------------------------------------------------------------------------|----------------------------------------|
|  | Poolcast 500 kN (UGT) --> 400 kN (GGr) |
|  | Poolcast 400 kN (UGT) --> 300 kN (GGr) |
|  | Poolcast 300 kN (UGT) --> 200 kN (GGr) |
|  | Poolcast 200 kN (UGT) --> 150 kN (GGr) |



## Grundplan Funderingsbalken



Palenplan

Dikte plaat: 300  
-1- #150/8  
boven & onder  
+ bijlegwap.

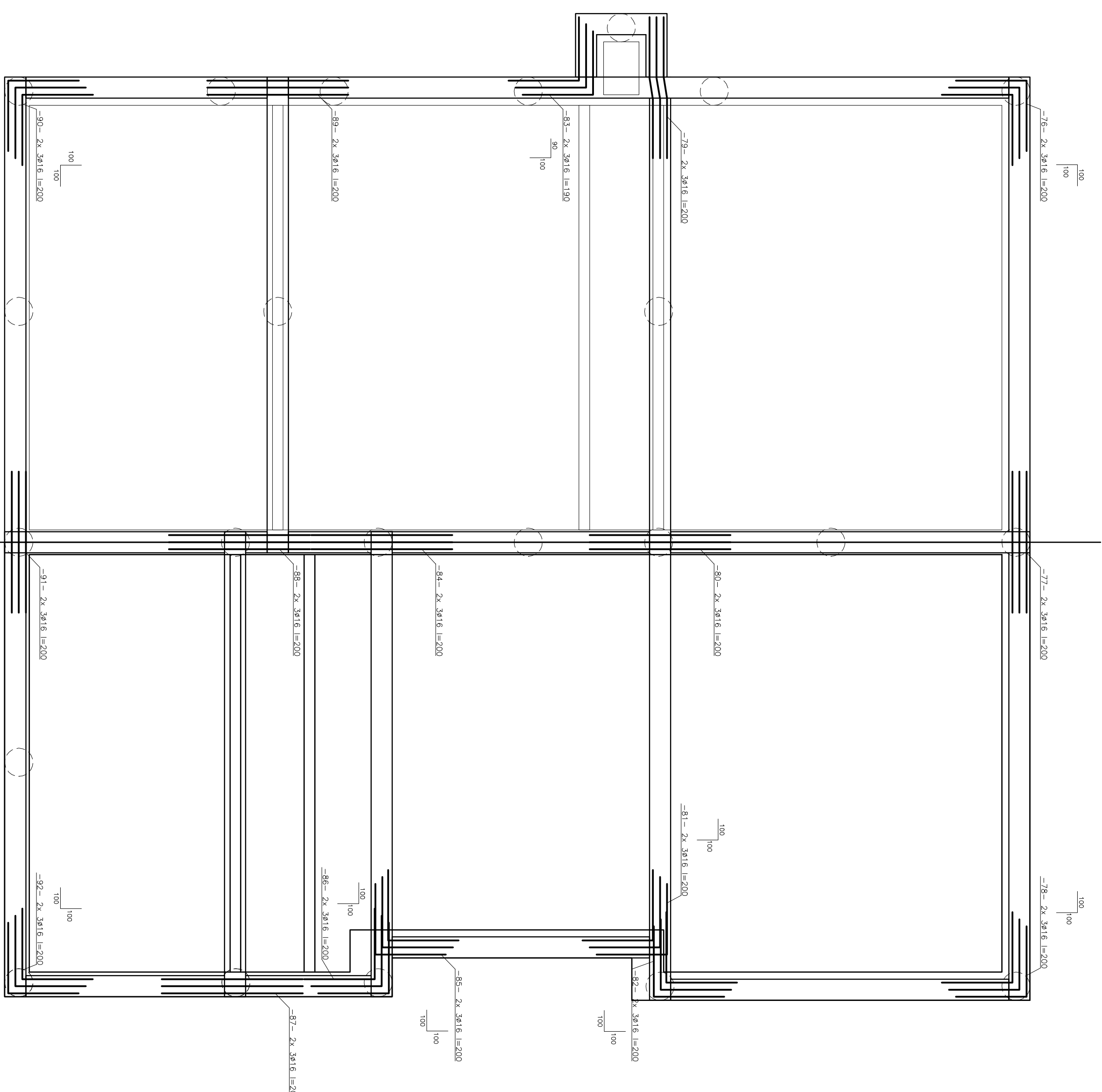
OP DE WERF BIJ TE LEGGEN

Bijlegwapingen: onder.

Bijlegwopening boven.

Let op!  
Rondom vorstrand  
tussen palen voorzien

Studie rekening houdend met  
permanente last:  $300\text{kg/m}^2$   
gebruikslast:  $200\text{kg/m}^2$



## Verbindungen Funderingsbalken

[illegible]